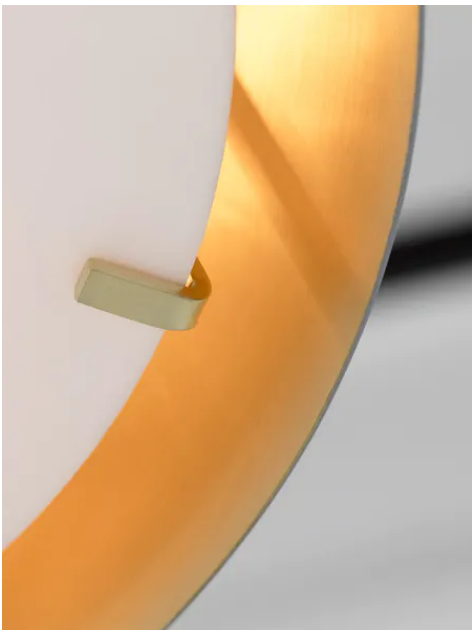


THE URBAN ELECTRIC C^o.



CHILTERN SINGLE



CHILTERN SINGLE

HANG REGULAR

MA-1864HR

DIMENSIONS

Width	12in
Height	7.5in

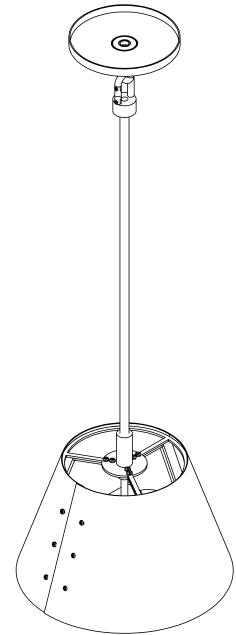
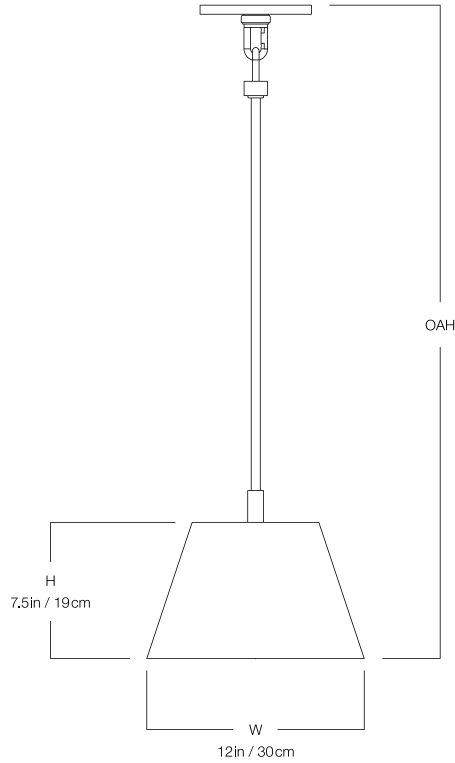
MOUNTING

Recommended Installers	2
Weight	8lbs
Canopy	6in dia
Junction Box	4in oct/rnd



LAMP / WIRING

Max Wattage	(2) 60W S
Ships with complimentary LED bulbs	



RATING

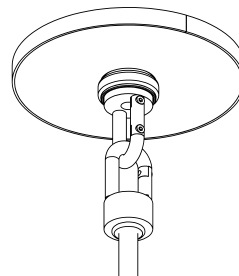
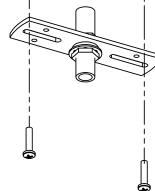
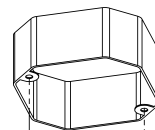
Suitable for DAMP locations

UL Listed



PATENTS

This fixture has been filed with the United States Patent and Trademark Office, U.S. Pat. Pen. (U.S. Appl. No. 29/664,533)



CHILTERN SINGLE

HANG LARGE

MA-1864HL

DIMENSIONS

Width	16in
Height	9.5in

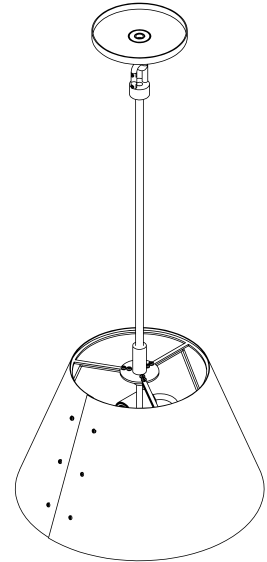
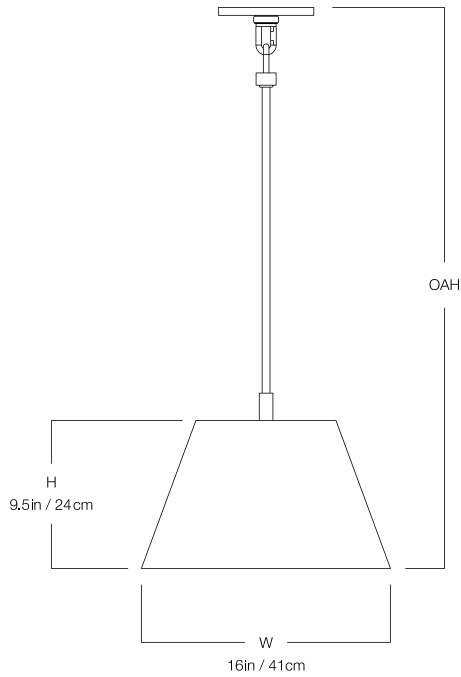
MOUNTING

Recommended Installers	2
Weight	11 lbs
Canopy	6in x 0in
Junction Box	4in oct/rnd



LAMP / WIRING

Max Wattage	(2) 60W S
Ships with complimentary LED bulbs	



RATING

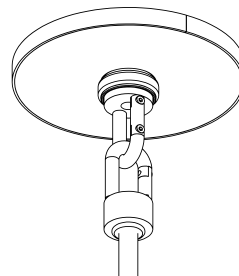
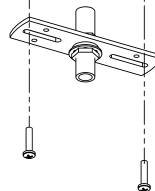
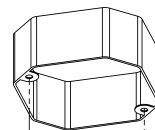
Suitable for DAMP locations

UL Listed



PATENTS

This fixture has been filed with the United States Patent and Trademark Office, U.S. Pat. Pen. (U.S. Appl. No. 29/664,533)



CHILTERN SINGLE

HANG GRANDE

MA-1864HG

DIMENSIONS

Width	20in
Height	12.5in
Depth	0in
X	0in
Y	0in
Z	0in

MOUNTING

Recommended Installers	2
Weight	16lbs
Canopy	8in x 0in
Junction Box	4in oct/rnd



LAMP / WIRING

Max Wattage (2) 60W S
Ships with complimentary LED bulbs



RATING

Suitable for DAMP locations



UL Listed

ADA compliant



PATENTS

This fixture has been filed with the United States Patent and Trademark Office, U.S. Pat. Pen. (U.S. Appl. No. 29/664,533)

