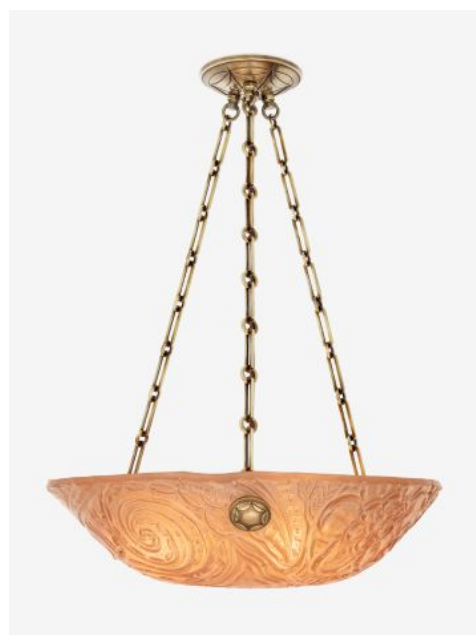


THE URBAN ELECTRIC COMPANY



ROSAMUND



# ROSAMUND

HANG REGULAR

UE-2462HR

## DIMENSIONS

Width	21.25in
Height	5.75in
X	6in

## MOUNTING

Recommended Installers	2
Weight	28lbs
Canopy	6in dia
Junction Box	4in oct/rnd



## LAMP / WIRING

Max Wattage	(3) 60W C
Ships with complimentary LED bulbs	



## RATING

Suitable for DAMP locations



UL Listed

