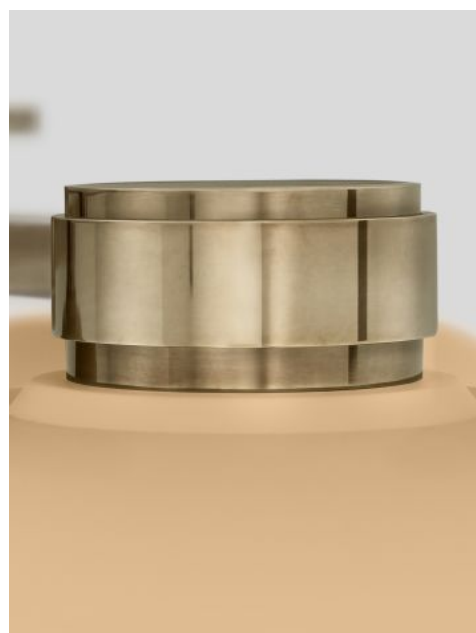


THE URBAN ELECTRIC COMPANY



STAMFORD TRIPLE



STAMFORD TRIPLE

HANG REGULAR

UE-2428HR

DIMENSIONS

Width	56in
Height	10in
X	18.75in
Y	8in

MOUNTING

Recommended Installers	3
Weight	75lbs
Canopy	10in dia
Junction Box	4in oct/rnd



WARNING: HEAVY

*Safety cable must attach to building structure.

*Appropriately rated, heavy duty junction box required.

LAMP / WIRING

Max Wattage (3) 60W S

Ships with complimentary LED bulbs



RATING

Suitable for DAMP locations



UL Listed

