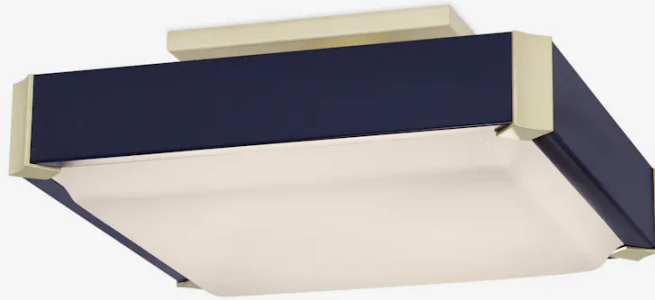
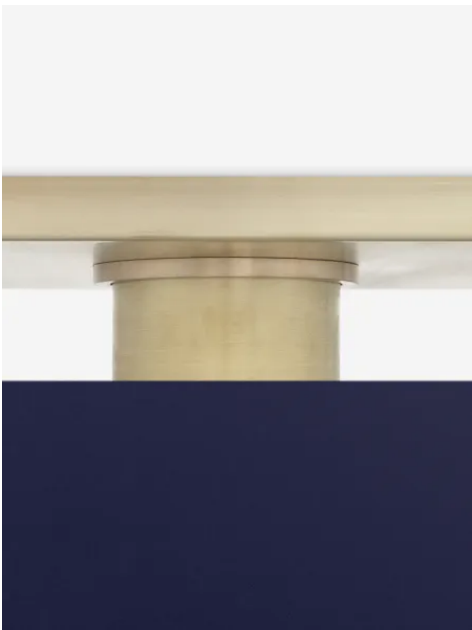


THE URBAN ELECTRIC COMPANY



TURNER



# TURNER

HANG REGULAR

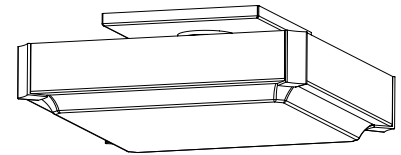
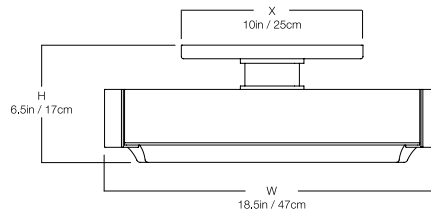
UE-2080HR

## DIMENSIONS

Width	18.5in
Height	6.5in
X	10in

## MOUNTING

Recommended Installers	2
Weight	28lbs
Canopy	10in x 10in
Junction Box	4in oct/rnd



## LAMP / WIRING

Ships with complimentary LED panel



## RATING

Suitable for DAMP locations

UL Listed

