

THE URBAN ELECTRIC COMPANY



YVES FLUSHMOUNT



# YVES FLUSHMOUNT

HANG SMALL

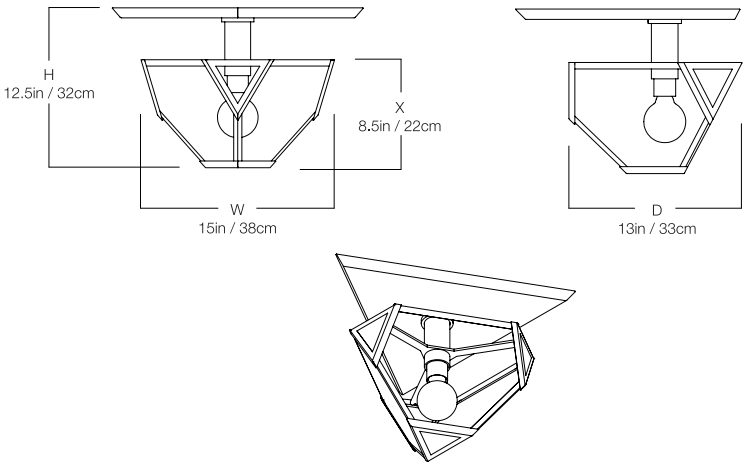
MA-1640HS

## DIMENSIONS

Width	15in
Height	12.5in
Depth	13in
X	8.5in

## MOUNTING

Recommended Installers	2
Weight	11lbs
Canopy	22.5in dia
Junction Box	4in oct/rnd



## LAMP / WIRING

Max Wattage	(1) 60W S
Ships with complimentary LED bulb	



## RATING

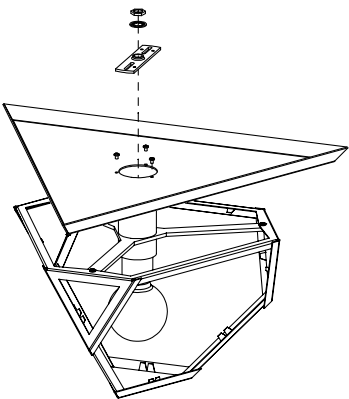
Suitable for DAMP locations

UL Listed



## PATENTS

This fixture is Patented with the United States Patent and Trademark Office.  
Patent No. D807,564 January 09, 2018



# YVES FLUSHMOUNT

HANG REGULAR

MA-1640HR

## DIMENSIONS

Width	20.75in
Height	16.25in
Depth	18in
X	11.5in

## MOUNTING

Recommended Installers	2
Weight	21lbs
Canopy	27in x 0in
Junction Box	4in oct/rnd



## LAMP / WIRING

Max Wattage	(1) 100W S
Ships with complimentary LED bulb	



## RATING

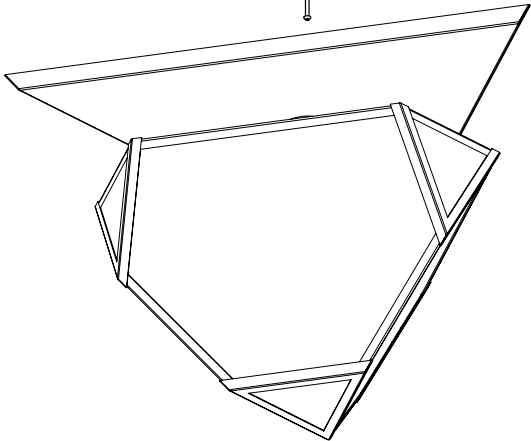
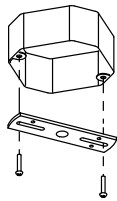
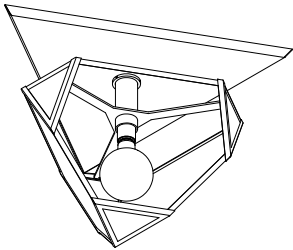
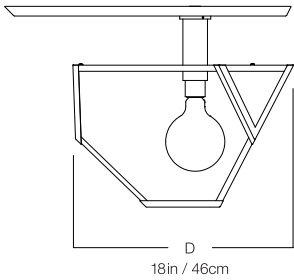
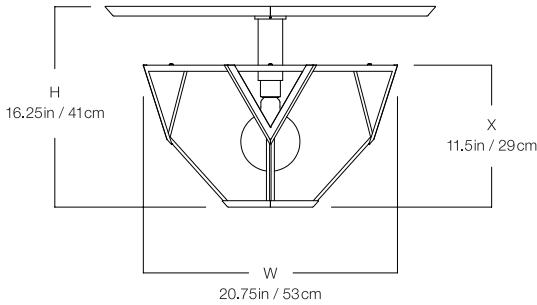
Suitable for DAMP locations

UL Listed



## PATENTS

This fixture is Patented with the United States Patent and Trademark Office. Patent No. D807,564 January 09, 2018



# YVES FLUSHMOUNT

HANG LARGE

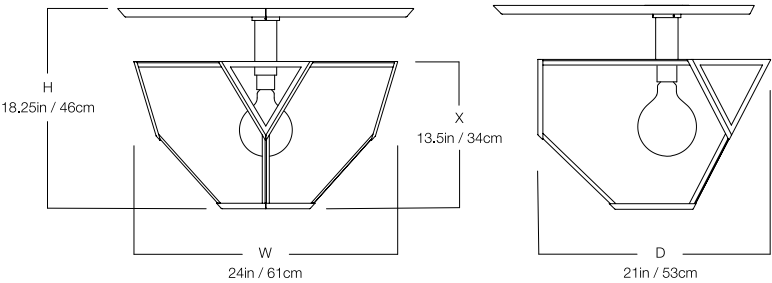
MA-1640HL

## DIMENSIONS

Width	24in
Height	18.25in
Depth	21in
X	13.5in

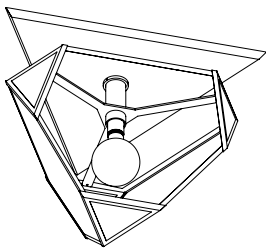
## MOUNTING

Recommended Installers	2
Weight	22lbs
Canopy	27in x 0in
Junction Box	4in oct/rnd



## LAMP / WIRING

Max Wattage	(1) 100W S
Ships with complimentary LED bulb	



## RATING

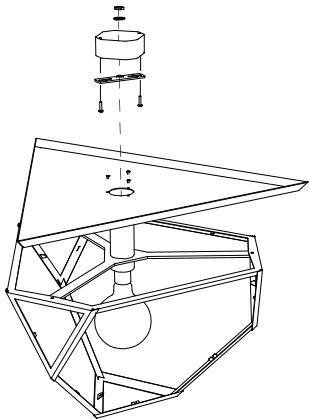
Suitable for DAMP locations

UL Listed



## PATENTS

This fixture is Patented with the United States Patent and Trademark Office. Patent No. D807,564 January 09, 2018



# YVES FLUSHMOUNT

HANG GRANDE

MA-1640HG

## DIMENSIONS

Width	28in
Height	20.25in
Depth	24.25in
X	15.75in

## MOUNTING

Recommended Installers	2
Weight	28lbs
Canopy	27in x 0in
Junction Box	4in oct/rnd



## LAMP / WIRING

Max Wattage	(1) 100W S
Ships with complimentary LED bulb	



## RATING

Suitable for DAMP locations

UL Listed



## PATENTS

This fixture is Patented with the United States Patent and Trademark Office. Patent No. D807,564 January 09, 2018

